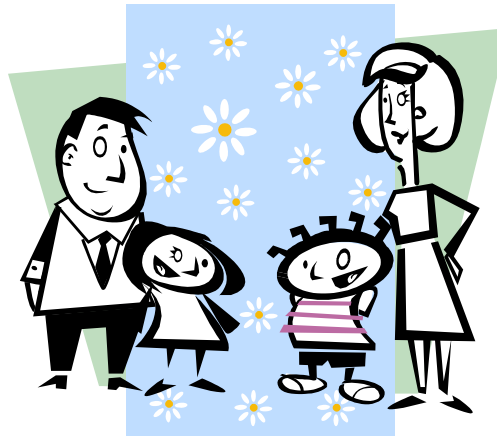


FOUR AREAS OF SUPPORT

FAMILY

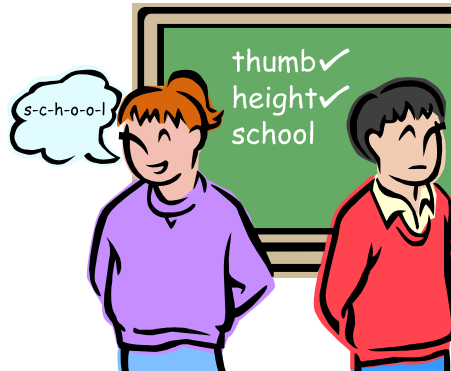
- * Many LGBTQ youth are rejected by their families
 - * Many are forced to leave home
 - * Many are subjected to violence
- * Cannot rely on family for support in tough times



FOUR AREAS OF SUPPORT (CONT'D)

SCHOOL

- * Hostile school environment
- * Verbal and Physical Assaults
 - * Many drop out of school
- * Creates difficulty in authentic peer interactions



FOUR AREAS OF SUPPORT (CONT'D)

COMMUNITY

- * Very few programs exist for LGBTQ youth
- * Many community organizations have strong anti-gay views
- * Many activities in gay community are adult-oriented



FOUR AREAS OF SUPPORT (CONT'D)

RELIGIOUS PARTICIPATION

- * Majority of churches and other groups reject homosexuality
- * Many youths feel compelled to choose between religion and self
- * Many organizations believe that it is something to be “cured”

